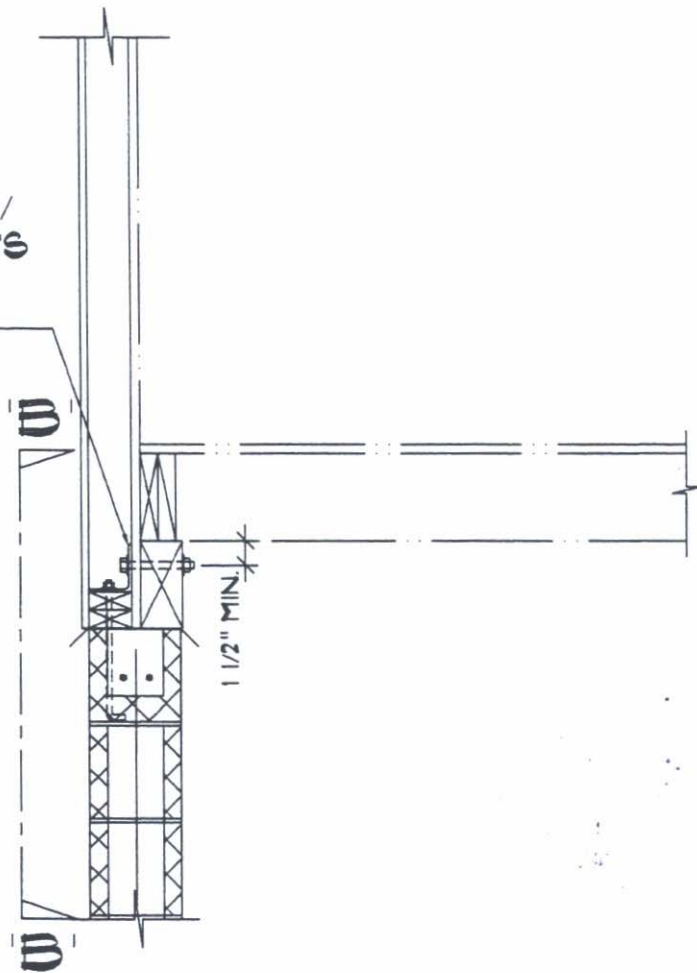


DETAIL 'B-B'

NEW L3 1/2x3 1/2x1/4
 @ 6'-0" O.C. MAX. W/
 2-5/8"φ THRU BOLTS
 & 2-5/8"φ A.B.
 (EMBED 8")



UPGRADED COND.

ANGLE CONNECTING 4x BEAM TO CMU WALL

SEISMIC ZONE	WIND EXPOSURE	DRAWING NUMBER
	C	4F

ANGLE TRANSFERS LATERAL (HORIZONTAL) FORCES FROM THE FLOOR BEAM INTO THE FOUNDATION