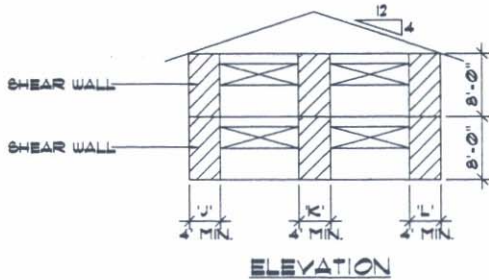
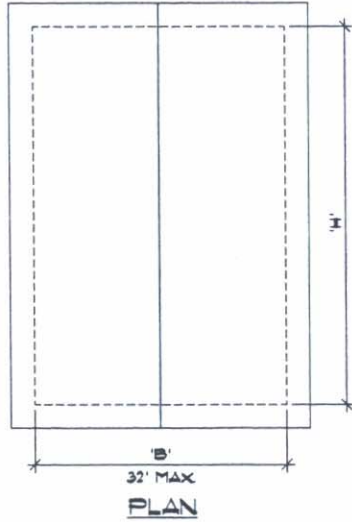


SHEAR WALL TABLE		
8d NAIL SPACING	L _{min}	H _{max}
S1 = 6" o.c., S2 = 12" o.c.	22'-0"	30'-0"
S1 = 4" o.c. S2 = 12" o.c.	14'-0"	30'-0"
	18'-0"	40'-0"

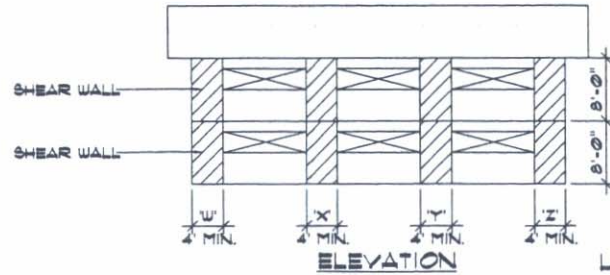
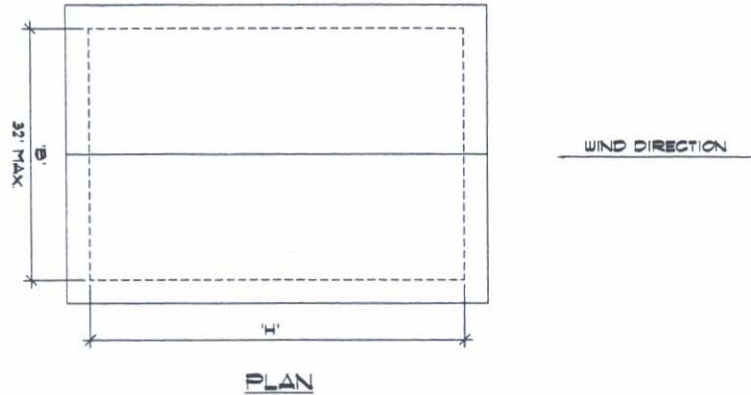
NOTES:
 S1 = NAIL SPACING AT WALL SHEATHING EDGES
 S2 = NAIL SPACING AT WALL INTERMEDIATE MEMBERS
 SEE DETAIL DRAWING NO. 2B FOR NAILING DETAIL



$$L_{\min} = U + X + Y + Z + \dots$$

SHEAR WALL TABLE		
8d NAIL SPACING	L _{min}	B _{max}
S1 = 6" o.c. S2 = 12" o.c.	12'-0"	20'-0"
	16'-0"	25'-0"
	20'-0"	32'-0"
S1 = 4" o.c. S2 = 12" o.c.	8'-0"	20'-0"
	10'-0"	25'-0"
	14'-0"	32'-0"

NOTES:
 S1 = NAIL SPACING AT WALL SHEATHING EDGES
 S2 = NAIL SPACING AT WALL INTERMEDIATE MEMBERS
 SEE DETAIL DRAWING NO. 2B FOR NAILING DETAIL



$$L_{\min} = U + X + Y + Z + \dots$$