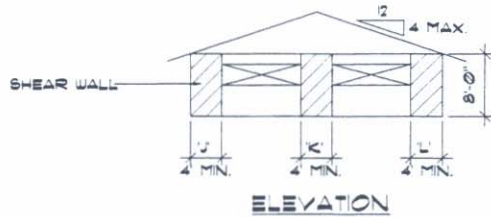
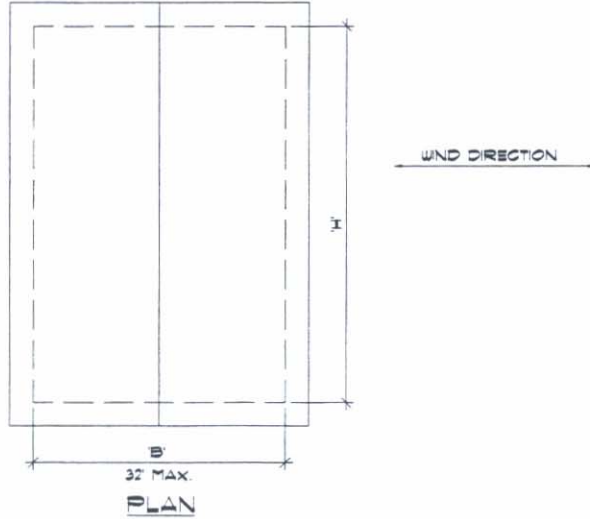


SHEAR WALL TABLE

8D NAIL SPACING	L _{min}	H _{max}
S1 = 6" O.C. S2 = 12" O.C.	10'-0"	25'-0"
	20'-0"	50'-0"
S1 = 4" O.C. S2 = 12" O.C.	6'-0"	25'-0"
	14'-0"	50'-0"
	16'-0"	75'-0"

NOTES
 S1 = NAIL SPACING AT WALL SHEATHING EDGES
 S2 = NAIL SPACING AT WALL INTERMEDIATE MEMBERS
 SEE DETAIL DRAWING NO. 1B FOR NAILING DETAIL



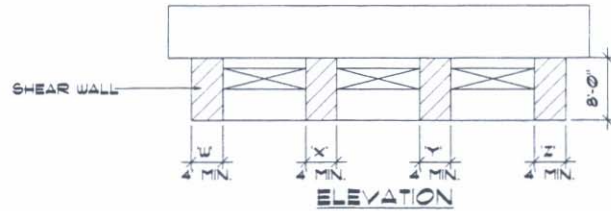
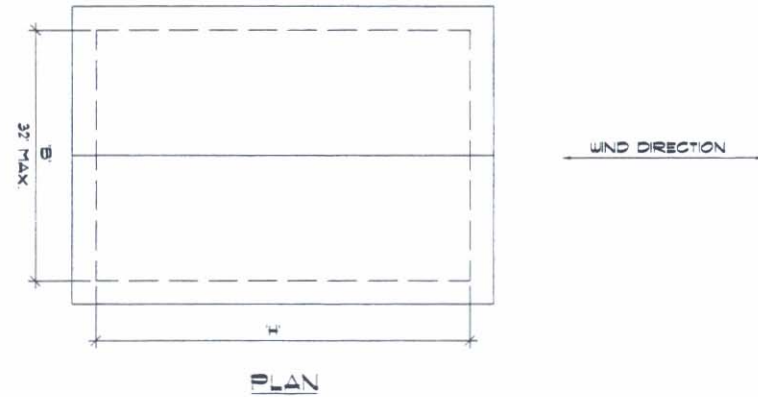
$$L \geq C + V + F + \dots$$

SHEAR WALL TABLE

8D NAIL SPACING	L _{min}	B _{max}
S1 = 6" O.C. S2 = 12" O.C.	7'-0" *	24'-0"
	10'-0"	32'-0"
S1 = 4" O.C. S2 = 12" O.C.	4'-0" *	24'-0"
	6'-0"	32'-0"

* WHERE PLAN AREA (BxH) IS GREATER THAN 1000 S.F., USE L_{min} FOR B_{max} = 32'-0".

NOTES
 S1 = NAIL SPACING AT WALL SHEATHING EDGES
 S2 = NAIL SPACING AT WALL INTERMEDIATE MEMBERS
 SEE DETAIL DRAWING NO. 1B FOR NAILING DETAIL



$$L \geq C + X + Y + N + \dots$$