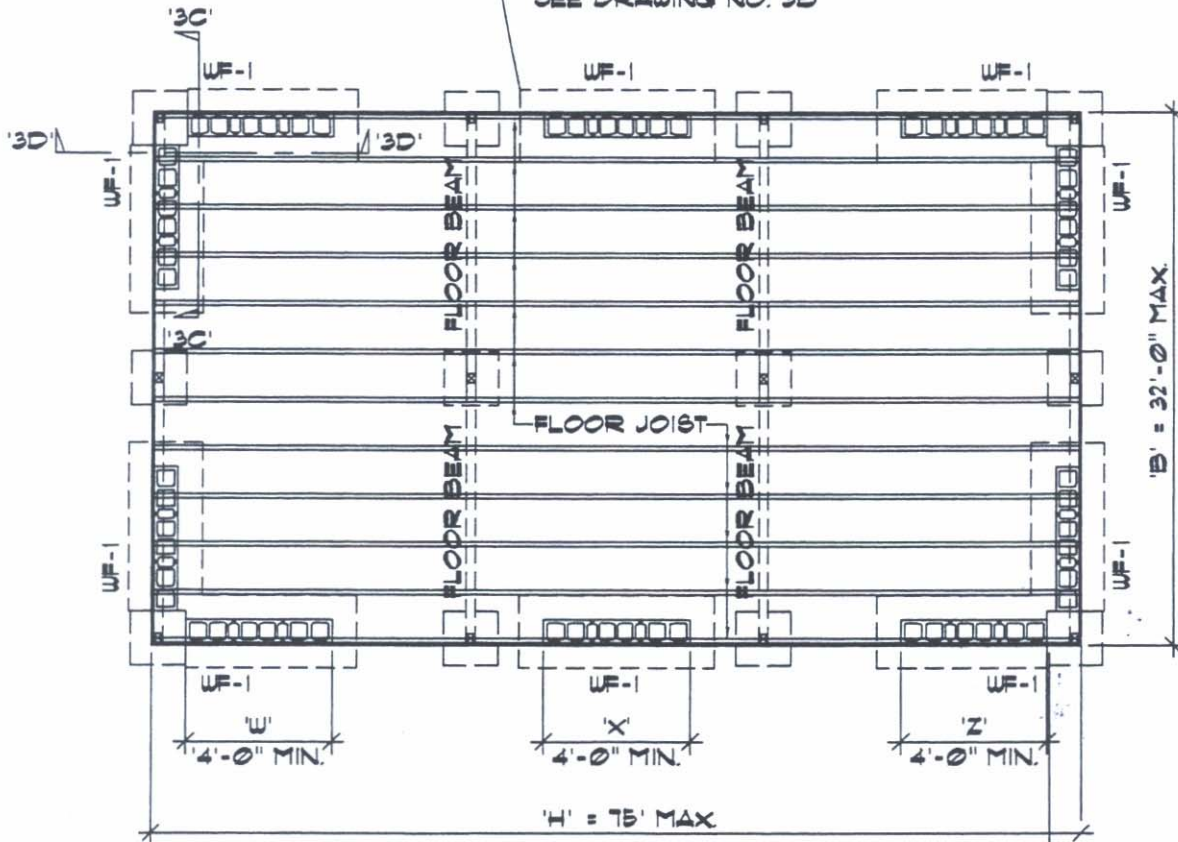


EXISTING CONDITION

"TOFU BLOCK"
FOOTING E/
POST (TYP.)

TYP. INTERMEDIATE COND.
SEE DRAWING NO. 3B



$A = B \times H = 1500 \text{ SF. MAX.}$

UPGRADED CONDITION

$L_{min} = W + X + Y \dots \text{ AND } J + K \dots$
(SEE DWG. NOS 1A AND 2A)

**"TOFU" BLOCK FOUNDATION UPGRADE W/
STUDS ADDED TO INTERIOR SIDE**

SEISMIC ZONE	WIND EXPOSURE	DRAWING NUMBER
4		3A

UPGRADE "TOFU" BLOCK WITH NEW CMU FOUNDATION BELOW SHEAR WALLS ABOVE & UPGRADE SINGLE WALLS BY ADDING STUDS INTERIOR TO THE EXISTING SINGLE WALL.