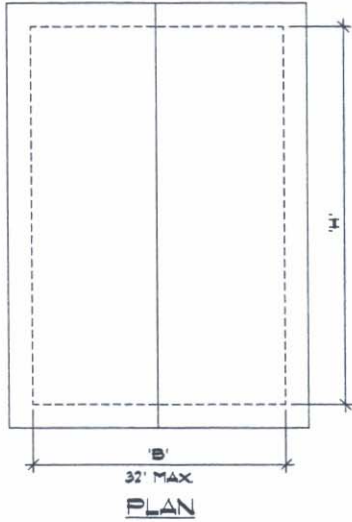


SHEAR WALL TABLE

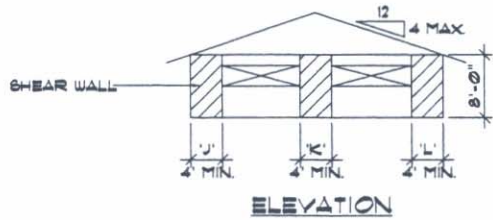
8d NAIL SPACING	L _{min}	A _{max}
S1 = 6" O.C. S2 = 12" O.C.	6'-0"	900 S.F.
	8'-0"	1200 S.F.
	10'-0"	1500 S.F.
S1 = 4" O.C. S2 = 12" O.C.	4'-0"	1000 S.F.
	6'-0"	1500 S.F.

NOTES:
S1 = NAIL SPACING AT WALL SHEATHING EDGES
S2 = NAIL SPACING AT WALL INTERMEDIATE MEMBERS
SEE DETAIL DRAWING NO. 1B FOR NAILING DETAIL



SEISMIC COMPONENT

$$A = W \times I$$

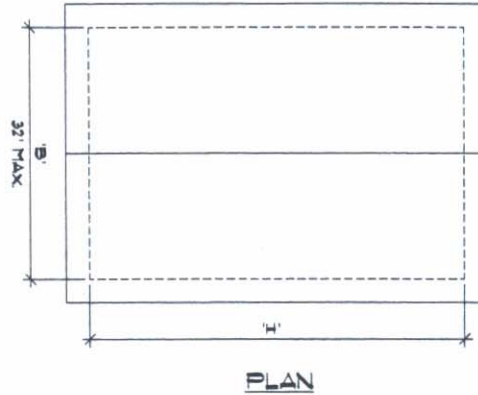


$$L_{min} = C + X + Y + Z + \dots$$

SHEAR WALL TABLE

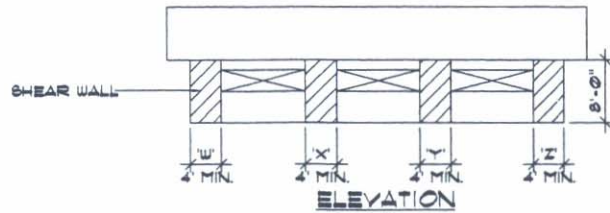
8d NAIL SPACING	L _{min}	A _{max}
S1 = 6" O.C. S2 = 12" O.C.	6'-0"	900 S.F.
	8'-0"	1200 S.F.
	10'-0"	1500 S.F.
S1 = 4" O.C. S2 = 12" O.C.	4'-0"	1000 S.F.
	6'-0"	1500 S.F.

NOTES:
S1 = NAIL SPACING AT WALL SHEATHING EDGES
S2 = NAIL SPACING AT WALL INTERMEDIATE MEMBERS
SEE DETAIL DRAWING NO. 1B FOR NAILING DETAIL



SEISMIC COMPONENT

$$A = W \times I$$



$$L_{min} = E + X + Y + Z + \dots$$